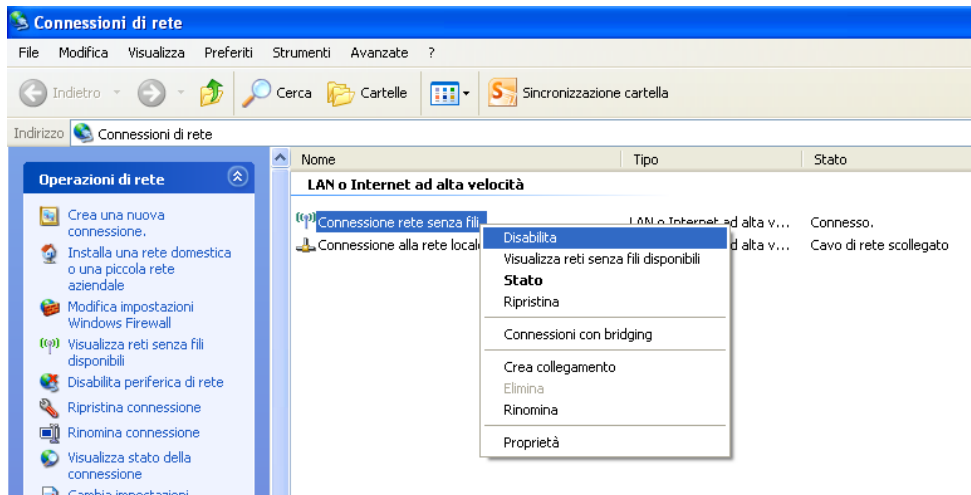
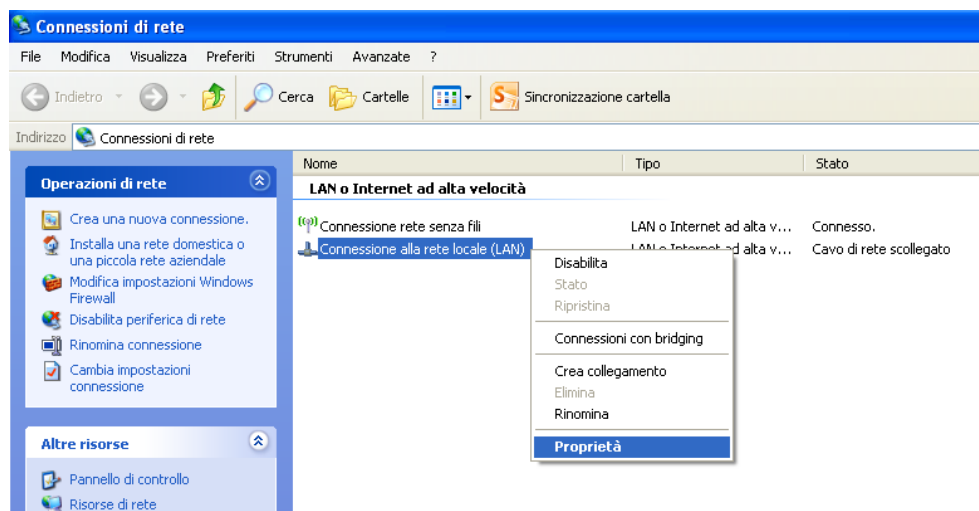


Prosistel controller Ethernet door Setting Instruction.

1. Connec your Controller to your PC ethernet door;
2. Disconnect PC from internet connection;
3. Disable firewall and antivirus for time necessary to configure controller ethernet door settings, afterwards you will be able to reactivate them;

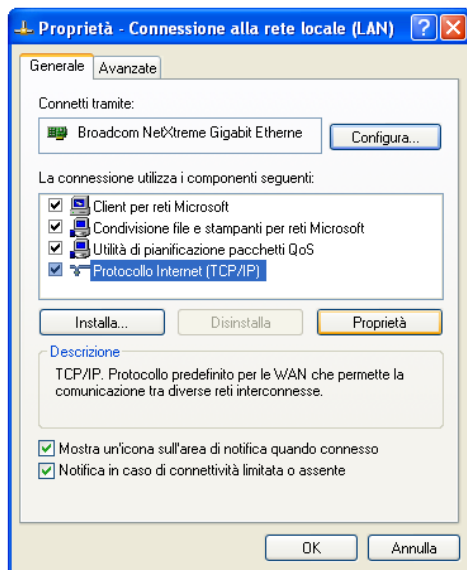


4. In **"Network connections"** disable **"Wireless connections"** (right mouse key > disable>)



and open **"Property"** of **"LAN"** [right mouse key>property];

5. A window will open, select “**Internet protocol (TCP/IP)**” than click on **Property**;

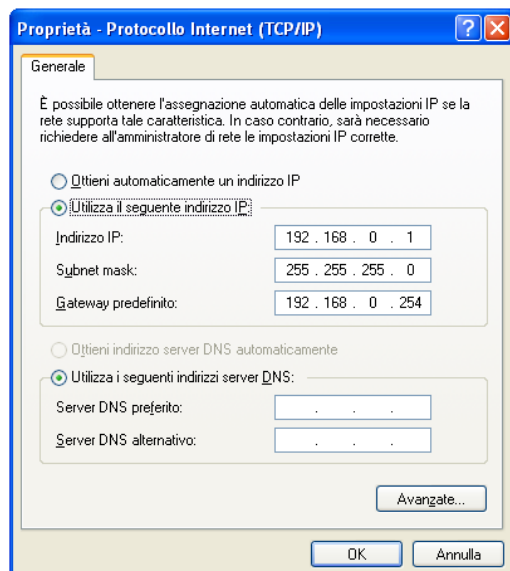


6. In the window that opens, enter the following values:

IP ADDRESS: 192.168.0.1

SUBNET MASK: 255.255.255.0

GATEWAY: 192.168.0.254



7. Open your internet browser, and write address <http://192.168.0.7> system will ask default User and Password

USER: admin

PASSWORD: admin

The screenshot shows a web browser window with the address bar displaying '192.168.0.7'. The page title is 'CP232-T2'. The main content area has a blue header with the USR logo and the slogan 'Be Honest, -IOT Experts-'. Below the header is a sidebar with navigation links: 'Current Status', 'Local IP Config', 'Serial Port' (highlighted in orange), 'Expand Function', 'Misc Config', and 'Reboot'. The main content area is titled 'parameter' and contains the following configuration fields:

- Baud Rate: 9600 bps
- Data Size: 8 bit
- Parity: None
- Stop Bits: 1 bit
- Local Port Number: 20108 (1~65535)
- Remote Port Number: 8234 (1~65535)
- Work Mode: TCP Server
- Remote Server Addr: 192.168.0.201
- RESET: ☐
- LINK: ☐
- INDEX: ☐
- Similar RFC2217: ☒

At the bottom of the configuration area are 'Save' and 'Cancel' buttons.

8. In **Serial Port** set **following parameters**:

BAUD RATE: 9600

DATA SIZE: 8

PARITY: none

STOP BITS: 1

LOCAL PORT NUMBER: 20108 (or any number between 1 e 65535)

REMOTE PORT NUMBER: 8234 (not configurable)

WORK MODE: TCP server

REMOTE SERVER ADDR: 192.168.0.201

RESET: no flag

LINK: no flag

INDEX: no flag

SIMILAR RFC2217: flag on

9. Click on **Save**;

10. Go on Misc Config page you may change **Username** e **Password** (*record them in your password store, you will need them for any future system access*).

11. When done click on **Save**;

12. When configuration is complete click on **Reboot**

Now connect the controller to your router (or ethernet switch), enter in your router configuration page and find the IP address to use for reach controller ethernet door.

Warning, because of the different versions of Windows, these instructions may be inadequate if necessary get help from a computer expert.